

Award Winning Opportunity



#1 Most Recommended Activity Company

**INSPIRE IMAGINATION
NURTURE POTENTIAL**

Our Core Values



HAVE FUN



ENSURE QUALITY



SPARK CURIOSITY



INSPIRE IMAGINATION



NURTURE CREATIVITY



GIVE CARE

HELLO

Since 2002, we're privileged to have inspired **2.8 million children and adults** through creativity. Today, with our wonderful community of 60+ franchise partners, we're proud to be **UK's most recommended activity provider**, with **over 10,300 4.9/5-star reviews**.

It all began when I had three boys under four. I noticed many activities focused on everyone doing the same, with no scope to nurture individual interests. Alongside an expert team, we developed a child-led approach that sparks **curiosity, builds confidence, and unleashes the wonder within each individual**.

It was incredibly popular! Loved by children and adults alike.

Today, we bring **multi-award-winning creative experiences to all ages** - baby keepsakes, toddler classes, after-school clubs, adult workshops, care home sessions, parties, and events.



Being awarded an OBE by the King for services to creativity was an incredible honour. *The real magic though, is supporting friendly, proactive people to inspire imagination and nurture potential, and seeing the real difference this makes in people's lives.*

With demand growing and waiting lists in many areas, I'm so glad you've got in touch.

Explore whether becoming a Creation Station Franchise Partner is right for you.

If you're looking for a flexible, rewarding, purpose-driven business that fits around your life and makes a genuine difference, then you're in the right place.

Explore the next pages to see what's possible. If it resonates with you, book a chat with us - it could be the new direction you've been looking for, just as it has been for so many of our successful partners.

Here's to Inspiring Futures,

Sarah

Sarah Cressall OBE
Founder & CEO, The Creation Station
Multi-Award-Winning Entrepreneur
#1 Best-Selling Author



Book a chat

The First Step: What's Important To You?

For many, it's about some or all of the following

- ✓ **Flexibility** – Work around your family and life.
- ✓ **A New Challenge** – Ready for something fresh and exciting.
- ✓ **More Control** – Be your own boss and choose your hours.
- ✓ **Higher Earnings** – Unlock your potential and grow.
- ✓ **Time for You** – Do what YOU love.
- ✓ **Running a Business** – Always wanted to? Now's your time!
- ✓ **Make a Real Impact** – Use your time to nurture potential and inspire others.



Imagine Doing What You Love

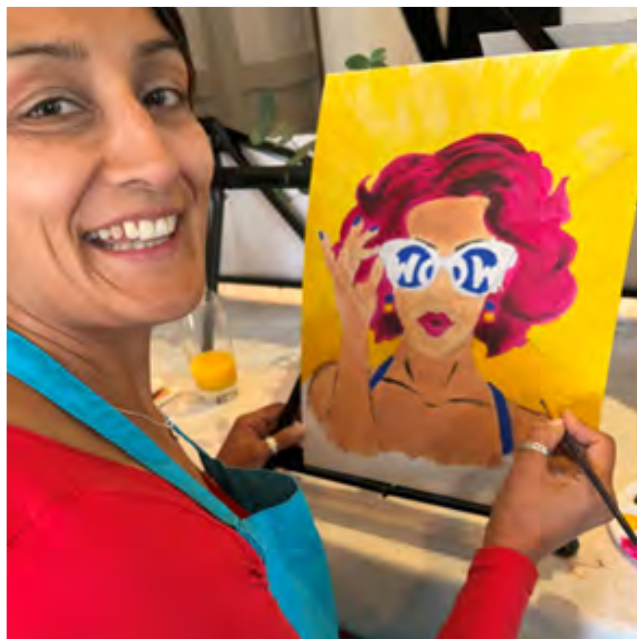
Step into a proven, successful business model as a Creation Station Franchise Partner, designed to fit around your life and help you achieve your goals.

- 💡 Flexible around family & lifestyle.
- 💡 Inspire all ages through fun arts and craft classes, clubs, parties and events.
- 💡 Part of an awesome friendly, supportive community.

12 All Year Round Income Streams

Multi-award-winning, memorable parent and baby keepsakes, magical pre-school classes, exciting parties, and fun-filled creative experiences for the whole family.





Expand Your Impact as a Creation Station Partner

Run after-school clubs, holiday camps, Paint & Sip nights, craft workshops, multi-generational activities, and bring creativity to care homes.

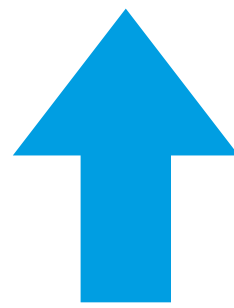
Support charities, run SEND workshops, lead Warm Spaces initiatives, collaborate to create a positive impact.

The demand for creativity is growing!

- 59% of adults engage in arts activities at least once a week.*
- 70% of children (5-10 yrs) take part in arts and crafts annually, with many enjoying creative fun beyond school.**

This growth in demand is reflected in the

29%



increase in our bookings in 2026.

Exclusive Opportunity One Partner Per Area

- **Exclusive Territory** – Only one Creation Station partnership per area.
- **Comprehensive Training** – Gain the knowledge and skills to succeed.
- **Ongoing Support** – Guidance every step of the way
- **Community Impact** – Inspire creativity and make a real difference.



[Check To See If Your Area Is Available](#)

*Participation Survey 2022/23

** Statista 2025



Proven Tried & Tested Model With Ongoing Support

Starting something new can feel daunting. That's why we provide a fully tailored supportive business system to guide you every step of the way.

✦ **Tried and tested business model** – So you're not starting from scratch.

✦ **Professional resources, systems and tools** – To help you every step of the way.

✦ **Full training & one-to-one business mentoring** – Tailored to your goals.

✦ **A trusted, recognised brand** – Making it easier to grow.

✦ **12 all-year-round income streams** – A sustainable business model.

✦ **A community of like-minded people** – To share, learn, and support each other.

✦ **Run your own MOST recommended activity company** – Backed by national recognition.

Our goal is simple – to support you in building a business that works for you, enabling us to inspire imaginations and nurture potential.





Be Part Of The #1 Activity Company

Some Of The Partners We Love Working With



What Do People Say About Running Their Business



In April 2025, our Partners took part in an independent satisfaction survey.

We achieved '5-Star Satisfaction' for the fifth year

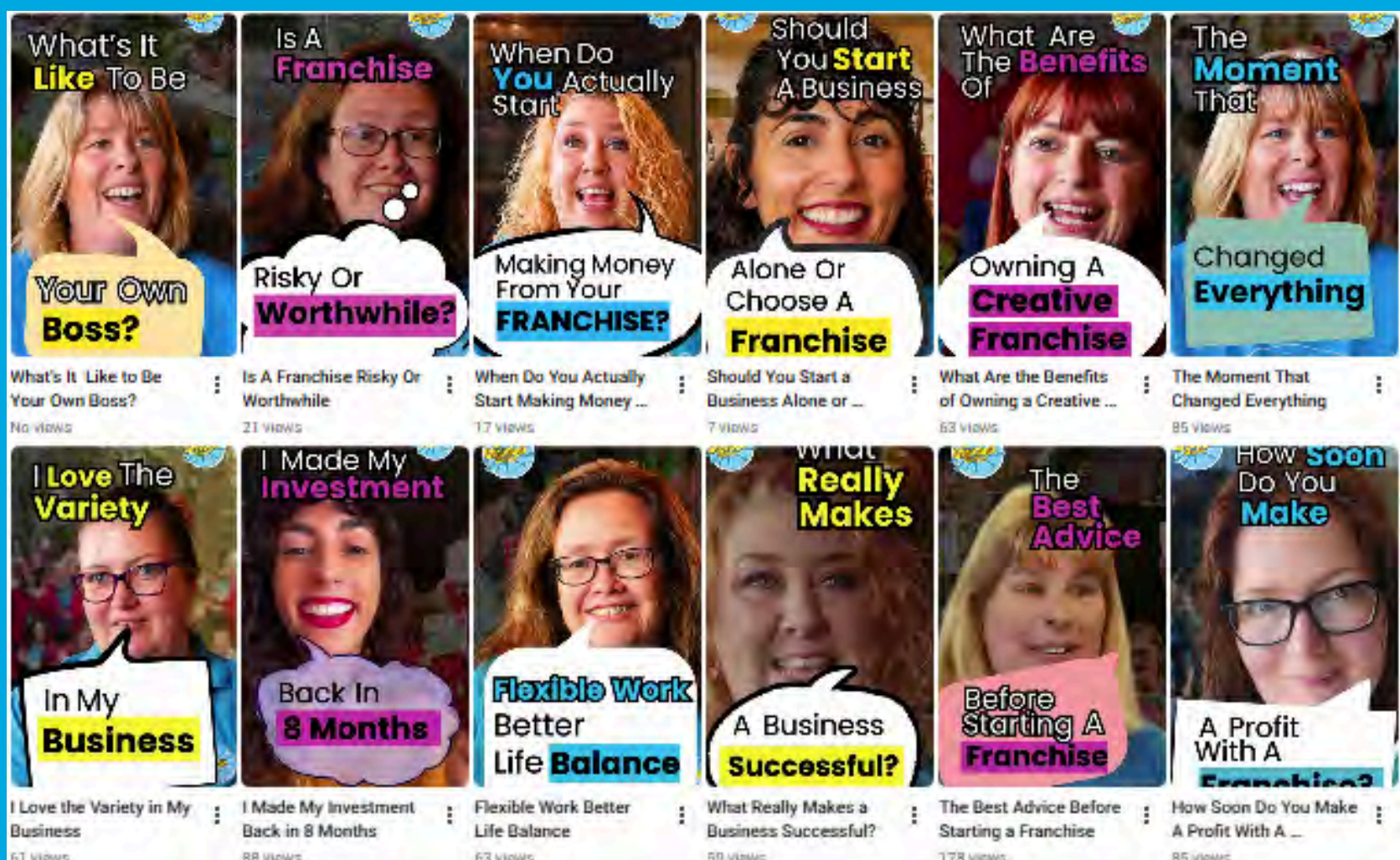


The overall satisfaction score was an industry high of

95%

Our commitment to supporting our team is reflected in these outstanding results.

Follow & See What Our Partners Say On [YouTube](#)



Funding Your Creation Station Franchise



Funding Your Creation Station Franchise

We've helped many partners secure 100% business funding. *Like buying a home, most people use finance to invest in their future.*

- ✓ No deposit required
- ✓ No collateral required
- ✓ Approx. 7.5% interest
- ✓ Repayable over 5 years (or sooner)
- ✓ Covers initial investment and working capital



For over 15 years, major British banks have supported Creation Station partners.

Every loan arranged has been repaid or is being repaid through business profits.

We'll guide you through the process and check your eligibility.

Contact us for an initial 15-minute chat.

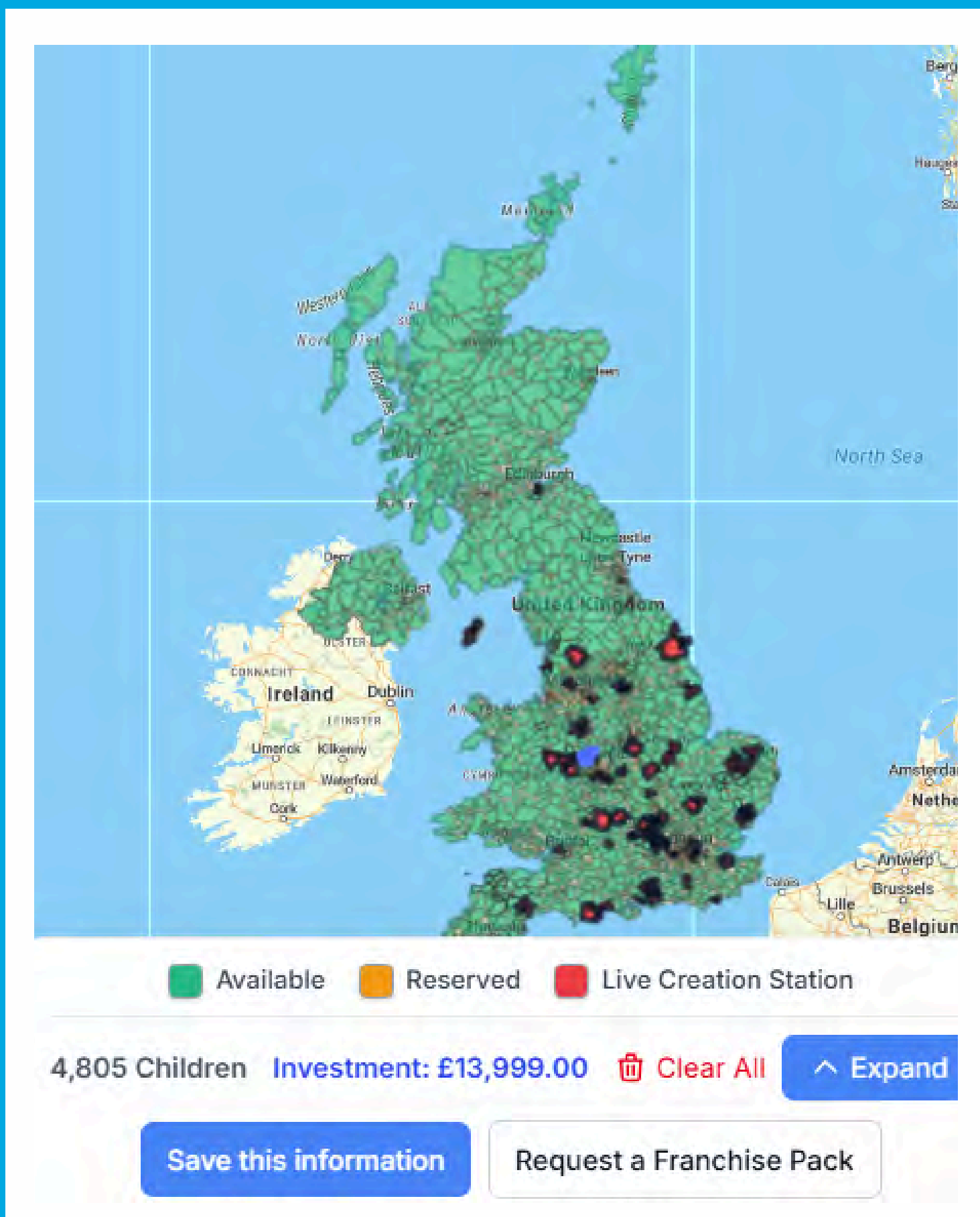


Your Investment & Exclusive Area

A franchise is an investment in your future, building a valuable business asset with our full support, giving you the opportunity to earn now, grow long-term and sell in the future.

Your investment includes full training, ongoing support, and starts from £13,999 (including VAT). This provides an exclusive territory of up to 5,000 children. You can invest in a larger area of 15,000 children.

>> Explore our interactive map to view availability and investment options



Ongoing monthly support costs

- Management Fee: £270 or 10% (whichever is higher)
- Booking System: £10, Canva Design Software £8.33
- CRM (Customer Relationship Management System) £24



How Much Can I Earn?

Your turnover depends on how you run your business.

Our Creativity Partners, typically see turnover anywhere between **£20,000 and £100,000+ per year.**

While this isn't guaranteed, what we do guarantee is expert support to help you set income goals and create a plan to achieve them.

Some Creativity Partners run their business solo, while others scale up with our support, building a team to grow further. For example:

- One Partner runs 22 after-school clubs a week.
- Another, took £10,000 in just four days running holiday camps.

With our support and guidance, you can shape your business to suit your goals and lifestyle.



Book a chat



**Message Us With
Any Questions**

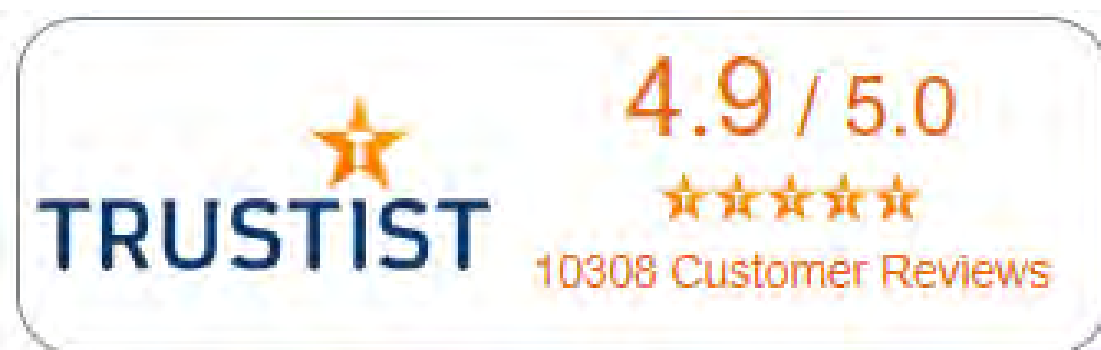


#1 Most Recommended Multi-Award-Winning Opportunity

As the UK's longest-running creative activity company, we innovate, evolve, and seize new opportunities.

Our resilient, future-focused franchise provides cutting-edge tech, ongoing training, mentoring, resources, and support. Everything you need to build a thriving business.

With 10,300+ reviews with a 4.9/5 rating, customers trust The Creation Station brand for value, fun, and quality.



Here are a few of our awards across education, entertainment, business, and franchising.

- The MOST recommended activity provider in the UK
- BFA HSBC UK Franchisor of the Year
- #34 Top Franchises in the UK – Elite Franchise
- Winner – Most Supportive Franchise & Top Franchise
- Winner – Community Builder Award
- Winner – Sylvia Anderson Award for Creativity
- Winner – Best Franchisee Marketing Support
- Winner – 'Crème de la Crème' Business Award
- Winner – Best Interactive Business Award
- Winner – Best Franchise (Children's Services) – Best Franchise Awards
- Finalist – Richard Branson's Impact Award
- Winner – Best Website – Franchise Marketing Awards
- Winner – Excellence & Innovation in Children's Education Services
- Winner – Best Creative Play Award
- Finalist – Festival Supplier Awards
- Winner – Best Woman Franchisor UK



Super Inspire Bonus Offer

We've released a limited number of offers designed to give successful candidates the strongest start in building a thriving business.

- Save up to £8,000 in investment costs
- Unlock £33,000 worth of exclusive bonuses

This is a fantastic opportunity to accelerate your success and maximise your investment with exceptional value and support.



BONUS BUNDLE

Bonus #1: Start-Up Kit – Worth £1,000

Bonus #2: Success Path Programme. Worth £2,000

Bonus #3: Your Customer Service Management System £24 instead of £44/mth

Bonus #4: Reduced costs in the first year – Worth £1,000+

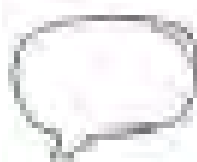
Bonus #5: 3-Month Marketing Plan – Worth £1,000

Bonus #6: Client Proposals & Sales Scripts – Worth £800

Bonus #7: Exclusive Party Provider Licence – Worth £5,000*

Bonus #8: Option to work in Head Office Area – Worth £2,000*

Bonus #9: Exclusive Event Provider Licence – Worth £5,000*



Book a chat

From Classrooms to Creativity: Emma's Journey



Emma always dreamed of running her own creative business. Since joining The Creation Station in 2017, she's built a thriving business in Harborne and Bartley Green.

★ Why did you want to change career?

"I worked with children and young adults with complex needs but had little say in how I taught. It was all about exams, not individuality. I knew it was now or never—I had to follow my dream."

★ How was training?

"Incredible! I laughed more than I had in years and made lifelong friends. The support is amazing from the head office team and all the other partners."

★ How do you feel now?

"Confident and happy! I run 22 Create Clubs, love the parents, and adore the little ones. Being my own boss means I can sing in a choir, play sax in a band, and even go out on a school night!"



Our Successful Creative Partners Come from All Walks of Life

No experience is needed. Benefit from full training and ongoing support to help you thrive.

If you're creative, you can add your own flair too.

We're looking for:

- ✓ Friendly and outgoing people
- ✓ Hardworking, motivated individuals
- ✓ Passionate about helping others

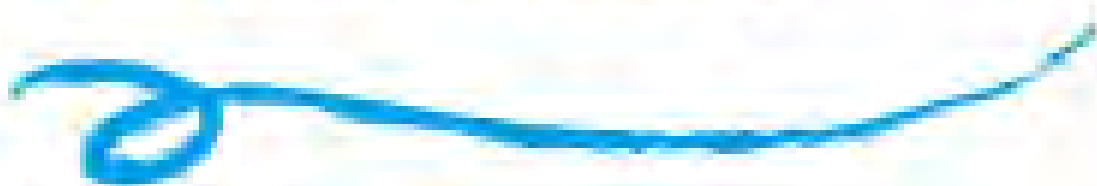
If that sounds like you, then let's chat!



[Book a chat](#)



[Message Us With Any Questions](#)



From Cover Stories to Creativity: Hannah's Journey



After returning from maternity leave, Hannah realised her publishing career was no longer the right fit. In 2020, Hannah decided to find an opportunity to use her creative skills to help others and to be her own boss.

★ **Why a franchise?**

"I'm very creative, but I didn't want to start from scratch alone. Investing in a franchise gave me the support and resources I needed, while still allowing me to make it my own. The team has been fantastic, and I love bringing people together—young and old—knowing that every day, I'm making a difference."

★ **What do you love most?**

"I love seeing people grow in confidence. Watching their creativity flourish each week is pure joy. The variety of activities keeps everything exciting, and I've built such strong relationships with my customers."

★ **Where are you now?**

We had another little boy and I value having the flexibility and freedom to run my business around our life. Now I'm in my second five-year term, and still loving it! In just eight months, I smashed my goals, expanded, hired staff, and filled my classes. My events have been a huge success, and people are booking six months ahead. It's amazing to run such a positive, fun and flexible business!"

Your Journey to Becoming a Creativity Partner

Taking the next step is simple and designed to fit around your lifestyle.



Book a Chat
– Let's explore if this is the right fit for you.

Personal Invite –
Join a Live Discovery Event. Gain insights, meet the team, ask questions.

One-to-One Follow-Up. Discuss your goals, territory options and financials.

Review Time. We both confirm if we're a good fit for each other.

Secure Your Territory – Lock in your exclusive area with a £79 deposit.

Due Diligence. Review everything, sign and complete your investment.

Who Hoo! Franchise Awarded – Welcome aboard!

We start setting up your business, introduce you to your support team, and begin your training.

From Boardrooms to Brushstrokes: Alexis's Journey



Alexis felt like a "round peg in a square hole" in the corporate world. She always wanted to do something creative but didn't know where to start. In 2020, she invested in her own Creation Station.

★ Why a franchise?

"I dreamed of running my own business but wanted guidance. I also wanted flexibility for my family and to make a real difference. The Creation Station ticked all the boxes."

★ You invested just before the pandemic?

"Yes! With Head Office support and my passion to help others, I adapted—running online classes and creating craft packs. Now, my business is thriving as more people seek creative, mindful activities."

★ How did it feel to leave corporate life?

"Going from a stable career to self-employment was daunting, but I knew if I didn't change, I'd regret it. The training was excellent, and the ongoing support is fantastic. I've signed up for my next five years and am loving the difference I make in my community. I'm excited to build on the success I've already created."



**You've Discovered
What's Possible.**

**Is This Something You
Could See Yourself
Enjoying?**

If so, we'd love to chat with you.
Most people have a few questions at
this stage. We're here to help.
Here's how you can get in touch:



Book a Chat



**Message Us With
Any Questions**

